

Adult Spiritual Formation
AND
Education Classes



SPRING 2010



Grace St. Paul's
EPISCOPAL CHURCH



A PROGRESSIVE COMMUNITY

Loving God, Helping Others, Journeying Together

Grace St. Paul's
EPISCOPAL CHURCH



A PROGRESSIVE COMMUNITY

Loving God, Helping Others, Journeying Together

2331 East Adams Street ☞ Tucson, Arizona 85719

(520) 327-6857 ☞ www.gsptucson.org

*Located four blocks north of Speedway,
one block west of Tucson Boulevard*

Introduction

GRACE ST. PAUL'S EPISCOPAL CHURCH is blessed to present a rich array of classes that provide a gateway to adult spiritual formation, based on our spring theme of *Sacred Places*. Our classes are –

- Innovative and intriguing
- Facilitated by parishioners and members of the larger spiritual community
- Guaranteed to make you think while on your spiritual journey
- Opportunities to become part of the Grace St. Paul's community
- Held on Sundays, 9–9:45 a.m., and occasionally from 11:30 a.m. to 12:30 p.m., as well as Saturdays and weekday evenings.

Additional Opportunities

ADDITIONAL OPPORTUNITIES for adult spiritual formation at Grace St. Paul's include and are not limited to Intercessory Prayer Team, Healing Touch, Lay Eucharistic Visitors, Community of Hope, Stewardship Committee and Social Justice & Outreach Committees.

Please visit our web site at www.gsptucson.org or check the weekly *Bulletin* for more information.

Children and Youth spiritual formation opportunities are also available at Grace St. Paul's. For more information, please contact Harriet Claiborne, Director of Children's Ministries, through the church office at 327–6857, or visit our web site.

Vision Statement

GRACE ST. PAUL'S WILL BE KNOWN for its commitment to the spiritual formation of people, that they might live a dynamically transformative Christian life. This vision will be embodied in –

- Experience of Christ's love
- Innovative Episcopal worship
- Education in progressive Christianity for all ages
- A diverse congregation and full integration of children and youth
- Celebration of individual gifts
- Action in the community

Contents

- 5** Class listing by date
- 7** Class listing by title, alphabetically
- 16** Facilitator index
- 18** Looking Ahead
- 19** Map

Class Listings by Date

<i>Date</i>	<i>Class Title</i>	<i>Page</i>
February		
1	Bible Workbench Study Group	8
7	The Development of the Great Litany	10
8	Bible Workbench Study Group	8
14	Give and Take on Immigration Issues with Fr. Jenks	11
	Youth Confirmation Class	15
15	Bible Workbench Study Group	8
21	Revisit the Visits by Borg, Crossan, and Spong to Grace St. Paul's	12
	Lenten Fellowship at Grace St. Paul's	12
	Youth Confirmation Class	15
22	Bible Workbench Study Group	8
28	Revisit the Visits by Borg, Crossan, and Spong to Grace St. Paul's	12
	Lenten Fellowship at Grace St. Paul's	12
March		
1	Bible Workbench Study Group,	8
7	The Tyranny of Dead Ideas	14
	Lenten Fellowship at Grace St. Paul's	12
8	Bible Workbench Study Group	8
14	Sacred Spaces, Sacred Places: Lenten Journey	13
	Lenten Fellowship at Grace St. Paul's	12
	Youth Confirmation Class	15
15	Bible Workbench Study Group	8
21	A Tribute to Bishop Oscar Romero	13
	Lenten Fellowship at Grace St. Paul's	12
	Youth Confirmation Class	15
22	Bible Workbench Study Group	8
25	Adult Education and Spiritual Formation Meeting	7
27	Immigration Academy	11
29	Bible Workbench Study Group	8

April

8	Enneagrams: A Tool for Spiritual Development,	10
11	Altar in the World: A Geography of Faith	7
	Youth Confirmation Class	15
15	Enneagrams: A Tool for Spiritual Development	10
18	Altar in the World: A Geography of Faith	7
	Youth Confirmation Class	15
22	Enneagrams: A Tool For Spiritual Development	10
25	Celebrate God's Creation	9

May

2	Animals and Spirituality	8
9	Animals and Spirituality	8
	Youth Confirmation Class	15
13	Budgets: Planning for Now and Tomorrow	8
16	Animals and Spirituality	8
	Youth Confirmation Class	15
20	Budgets: Planning for Now and Tomorrow	8
27	Budgets: Planning for Now and Tomorrow	8
30	Why Do Priests Wear Dresses (Part II)	14

To be announced

	Career Seekers Group	8
--	----------------------	----------

Alphabetical Class Listings

– A –

Adult Education and Spiritual Formation Meeting (open to all)

Thursday, March 25, 7–8:30 p.m. in the Weeks Room

HAVE YOU EVER WONDERED about a special topic in your spiritual life? Alternatively, have you read a book that you think would help others grow in their spirituality? Ever wanted to facilitate a group by yourself, or with a friend on a spiritual path? If so, come to the Adult Education planning meeting. Topics and class facilitators for the 2010 summer schedule are wanted and needed. The more the merrier!

If you need a class proposal form, or have any immediate questions, contact Chris LaBour or Chris Ledyard, TSSF, Co-Chairpersons of Adult Spiritual Formation and Education Covenant Group, through the church office at 327-6857.

Altar in the World: A Geography of Faith

Sundays, April 11 and 18, 9–9:45 a.m. in the Bloom Education Center

DISCUSSING BARBARA BROWN TAYLOR'S BOOK of the same title, let us share concrete ways to discover the sacred in the small things we do and see. Learn how to pay attention to what we are doing and take time to attend to the sights, smell, and sounds around us. Discover how the many and different occurrences in our daily lives attend to the divine.

Facilitated by Linda Hutson and Chris Ledyard. Linda is a Spiritual Director, and Certified Healing Touch Practitioner. Chris is a member of the Third Order of St. Francis and EfM mentor.

Animals and Spirituality:

The Bond that Connects Us to Our Animal Companions

Sundays, May 2, 9 & 16, 9–9:45 a.m. in the Bloom Education Center

GAIN MORE AWARENESS OF THE POWERFUL BOND that exists between our animal companions and us. Topics to be covered will include animal health, end-of-life issues, and grief when we lose a beloved pet. The last session will focus on ways to expand GSP's companion animal outreach ministry.

Facilitated by The Reverend Nadine Martin whose love for animals goes back many years. She also provides pastoral support for Grace St. Paul's members when animals are ill or have died.

– B –

Bible Workbench Study Group

Monday afternoons, 1–3 p.m., from February 8 until March 29,
in the St. Francis Room

JOIN A SMALL GROUP on Monday afternoon for a study of the lessons for the coming Sunday, considering relevance to our society and our personal lives.

Co-facilitated by Gretchen Collins, a retired pediatrician, and Walter Collins, a retired school psychologist, who consider themselves contented Grace St. Paul's seasonal members and “snow-birds.”

Budgets: Planning for Now and Tomorrow

Thursdays, May 13, 20, & 27,
6:30 p.m. to 7:30 p.m. in the Bloom Education Center

THE CLASS will start with basic budgeting techniques and concepts, and then move on to planning for your financial future. You will be

given valuable information to assist in your personal budgeting for today as well as assist with planning for retirement and related matters. It is never too soon to begin to budget and plan – especially in these times of continuing financial uncertainty. This class provides a resourceful approach to budgets, and financial goal setting replaces the results from none to poor budgeting.

Facilitated by Virginia Zuelow, a Financial Planner with expertise in the area of budgeting concerns.

– C –

Career Seekers Group

For more information, contact Bruce Anderson

MORE THAN A SUPPORT GROUP, this requires active participation. The group requires each person to work on a “profile” of their own skills, expertise, passion, values, and goals. Then participants will consider the types of organizations where they would like to use those skills. Concurrently, group members will hone their interview skills, armed with our newfound knowledge of ourselves from step one. At any point, participants will share their resume with each other. For more details, leave a message for Bruce Anderson with the church office at 327-6857.

Celebrate God’s Creation

Sunday, April 25, 9-9:45 a.m. in the Bloom Education Center

THIS CLASS WILL INSPIRE parishioners to “celebrate and protect God’s creation.” The class will look at approaches through Franciscan spirituality towards protecting our Sister, Mother Earth, as well as information on protecting the San Pedro River in southern Arizona. The class will be based on *A Catechism of Creation: An Episcopal Understanding*, prepared for study in congregations by

the Committee on Science, Technology and Faith of The Episcopal Church.

Co-facilitated by Dr. James Callegary and Chris Ledyard, TSSF. James is a Hydrologist at the US Geological Survey, and lives part time in the San Pedro River Valley where he is part of a communal ranch focusing on conservation and sustainable agriculture. Chris is a member of the Third Order of Saint Francis interested in exploring the concept of God's Creation in nature, each other, thru liturgy, and Celtic Christian Spirituality.

– D –

Development of the Great Litany

Sunday, February 7, 9–9:45 a.m. in the Bloom Education Center

AS LENT BEGINS, we turn to worship that is more penitential and focus on petitionary prayers – specifically as it relates to the Great Litany. In this class we focus on the Litany's invocations, deprecations, obsecrations, and suffrages.

Conducted by Chuck Dickson, who holds a Ph.D. in History and has taught for forty years.

– E –

Enneagrams: A Tool For Spiritual Development

Thursdays, April 8, 15 & 22, 7–9 p.m. in the Bloom Education Center

Pre-registration required by April 1.

ENNEAGRAMS have been correlated with the Myers-Briggs as a personality predictor in a ten year study conducted by psychologist Helen Palmer. It can be used to deepen spiritual development. Enneagrams provide various frameworks for clarifying the spiritual

paths, tasks, biases, and practices most relevant and useful to individuals. This can be the beginning of a life-long study. Please pre-register through the church office as this class requires a minimum of five and maximum of fifteen people.

Facilitated by Ardis Pitello who has studied and used Enneagrams for fifteen years.

– G –

Give and Take on Immigration Issues with the Rev. Glenn Jenks

Sunday, February 14, 9–9:45 a.m. in the Bloom Education Center

WE HONOR Bridging Borders Sunday with the Rev. Glenn Jenks who will lead a discussion, as well as a question and answer session, on border and immigration issues as they relate to the Episcopal Church. Father Jenks will also be giving the sermon at both services.

The Rev. Glenn Jenks has been active in immigration issues. He recently retired as rector of Good Shepherd of the Hills in Cave Creek and served as a curate at Grace Church in the 1970s.

– I –

Immigration Academy

Saturday, February 13, 9:30 a.m.–Noon in McBride Hall

DIRECTED AT FOLKS who have yet to make up their mind about Comprehensive Immigration Reform and want to know more about it, the Arizona Interfaith Network and the Pima County Interfaith Council (PCIC) devised a program in conjunction with the Episcopal Diocese. Brief reviews of the history and background, as well as present issues, are viewed through the eyes of the faith community. Brief lecture presentations augment role-playing and small groups.

Presented by members of Grace St. Paul's, PCIC staff, and perhaps members of other Episcopal Churches. Sponsored by Bridging Borders (Paul Gohdes, Chair).

– L –

Lenten Fellowship at Grace St. Paul's

Sunday, February 21 & 28; March 7, 14, & 21,
11:30 a.m.–12:30 p.m. in McBride Hall

COME AND SHARE A LENTEN MEAL and fellowship in place of the usual coffee hour on the Sundays during Lent. GSP's EfM groups will prepare a lunch of hearty soup, salad and bread and the Search Committee will provide a program focused on topics related to our journey of transition.

– R –

Revisit the Visits by Borg, Crossan, and Spong to Grace St. Paul's

Sundays, February 21 and 28, 9–9:45 a.m. in the Bloom Education Center

VIEW AND DISCUSS film clips of presentations by Marcus Borg, John Dominic Crossan, and Bishop John Shelby Spong when each one visited Grace St. Paul's in previous years. How do their concepts of Progressive Christianity match or differ from yours? This class may grow into a continuing Monday evening group if an interest continues after these classes.

Facilitated by Steve Williams, who has developed a strong interest in progressive Christianity.

**Sacred Spaces, Sacred Places:
Forming Community on the Lenten Journey**

Sunday, March 14, 9–9:45 a.m. in the Bloom Education Center

THE CREATION OF COMMUNITY is a challenging endeavor, and where a community gathers figures strongly in that creative process. Sacred places around the world, such as Stonehenge, Iona, the Holy Land, can forge a powerful unity amongst those who assemble in them. However, not all can travel to sacred spots such as these. In this class we will examine how the places of our lives (in groups or alone) may become sacred, where the Presence of Christ, the true bond of the Christian Community, may be revealed and experienced. We will also consider the Celtic approach to space, place, and the sacred.

Facilitated by The Rev. Fred Masterman, a Priest Associate at Grace St. Paul's.

**Tribute to Bishop Oscar Romero
on the 20th Anniversary of his Assassination.**

Sunday, March 21, 9–9:45 a.m. in the Bloom Education Center

THE MARTYRED ARCHBISHOP was a leading advocate of liberation theology, who, when the national Cathedral was destroyed in an earthquake, shocked the wealthy in Salvador by proclaiming it was a waste of money to rebuild, because, he said, “the church is the people.” Elected as an “apolitical” archbishop who was supposed to quiet the priests and catechists who spoke against economic injustice, he instead grew increasingly sympathetic to them and to the poor, and wound up at odds with the military rulers of his country.

He persevered with a weekly radio address to the whole country until a Salvadoran death squad shot him down while he was saying Mass. His international legacy lives on in the struggle to secure human rights and a decent way of life for all people. .

Facilitated by Laura Briggs, head of the department of Gender and Women's Studies at the UA and has extensive experience in Central America.

Tyranny of Dead Ideas: Letting Go of the Old Ways of Thinking to Unleash a New Prosperity

Sunday, March 7, 9–9:45 a.m. in the Bloom Education Center

WE WILL COVER KEY IDEAS and concepts based on the implications of Matt Miller's socio-political study, and apply it to our faith. Discussion will include a look at entering into "true prosperity" regardless of economic conditions, the societal consequences of years of "debt-fueled consumption," and how we may progress to Miller's concept of "destined ideas."

Facilitated by Lynda Canfield, EfM student and former spiritual director at Picture Rocks retreat.

– W –

Why Do Priests Wear Dresses? (Part II)

Sunday, May 30, 9–9:45 a.m. in the Bloom Education Center

WHY DO CLERGY wear vestments? What is the meaning of various garments and their origins, including the colors worn throughout the liturgical year? This class, a repeat of last fall's popular offering, examines evolution and current usage of vestments, other clerical attire, and liturgical places of interest.

Facilitated by Nanalee Raphael, instructor in Fashion Design at the Art Institute of Tucson, expert in Theatrical Costuming and Clothing History, and EfM co-mentor.

Youth Confirmation Class

2nd & 3rd Sunday of each month, Feb. 14 & 21, March 14 & 21, April 11 & 18, May 9 and 16, 11:30 a.m–12:30 p.m. in the Bloom Education Center

COME AND DISCOVER the joy and highlights of the Episcopal path. This will be a combination of Episcopal Church 101 and sharing your journey in the Twenty-first Century.

Conducted by the Reverend Deborah Heathcock, Interim Rector of Grace St. Paul's.

Index of Facilitators

Anderson, Bruce

Career Seekers Group, **9**

Briggs, Laura

Tribute to Bishop Oscar Romero, **13**

Callegary, James

Celebrate God's Creation, **9**

Canfield, Lynda

Tyranny of Dead Ideas, **14**

Collins, Walter & Gretchen

Bible Workbench Study Group, **8**

Cooney, Joan

Lenten Fellowship, **12**

Dickson, Chuck

Development of the Great Litany, **10**

Ghodes, Paul

Immigration Academy, **11**

Heathcock, Rev. Deborah

Youth Confirmation, **15**

Hutson, Linda

Altar in the World, **7**

Jenks, Glenn

Give & Take on Immigration Issues, **11**

LaBour, Chris

Adult Education & Spiritual Formation meeting, **7**

Ledyard, Chris

Adult Education & Spiritual Formation meeting, **7**

Altar in the World, **7**

Celebrate God's Creation, **9**

Martin, The Rev. Nadine

Animals & Spirituality, **8**

Masterman, The Rev. Fred

Sacred Spaces, Sacred Places, **13**

Pitello, Ardis

Enneagrams, **10**

Raphael, Nanalee

Why Do Priests Wear Dresses?, **14**

Williams, Steve

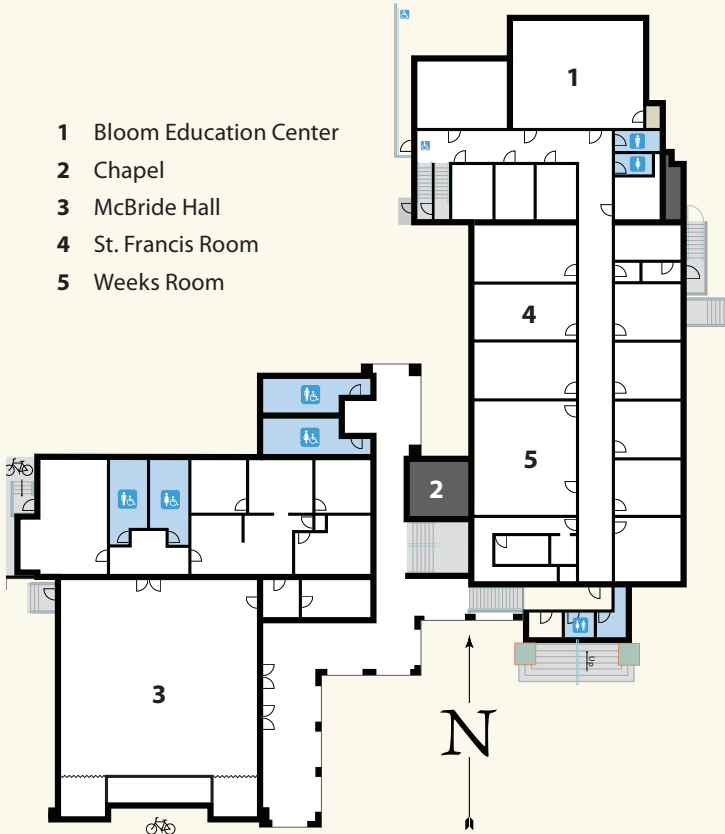
Revisit the Visits by Borg, Crossan, and Spong to Grace St. Paul's, **12**

Zuelow, Virginia

Budgets, **8**

Looking Ahead

Education for Ministry (EfM) Laypersons face the difficult and often subtle task of interpreting the richness of the church's faith in a complex and confusing world. Many of us find the need for a theological education that supports our faith and teaches us to express that faith in day to day events. Education for Ministry (EfM) has come to play an important role. Advance registration is required. EfM is a four-year course of study and is an extension of The University of the South, School of Theology. Currently, Grace St. Paul's has two EfM classes following this course of study. Classes meet weekly between September and May, with sign up in August. For more information about Grace St. Paul's EfM groups, contact Kay Bigglestone, Chris Ledyard or Nanalee Raphael through the church office at 327-6857. For more information generally about EfM, visit the university's website at www.sewanee.edu/efm.

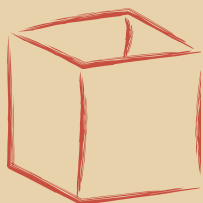


- 1 Bloom Education Center
- 2 Chapel
- 3 McBride Hall
- 4 St. Francis Room
- 5 Weeks Room

While we do our best to honor the published dates and times, changes are inevitable. For the most up-to-date information, visit our website at www.gsptucson.org.

THE ADULT SPIRITUAL FORMATION and Education Covenant Group offers opportunities for parishioners and other community members to explore the spiritual dimensions of their lives by –

- creating, planning, describing and promoting classes, workshops, book readings and lectures, and offering access to additional learning media such as books and DVD's.
- assisting and supporting long-term programs, such as Setting Our Hearts and Education for Ministry, and small group learning opportunities, such as home-based Bible Study groups.
- keeping each other in their prayers and supporting and encouraging participants as they seek to deepen their experience of God.



*T*aking religion out of the box
and keeping the question of
God alive!

Grace St. Paul's
EPISCOPAL CHURCH



A PROGRESSIVE COMMUNITY

Loving God, Helping Others, Journeying Together